



discover
ENGLISH



STUDENT GUIDE

WELCOME TO DISCOVER ENGLISH!

Discover one of Melbourne's best boutique English language colleges...

At Discover English we provide a first-class educational experience to benefit your life - personally and professionally. We offer the full range of General and Specialist English courses, as well as exam preparation courses plus a number of value-added extras to ensure every student reaches their full potential.

Studying English at Discover will be your key to unlocking amazing experiences and meeting extraordinary people from all over the world.

Our college is a full member of English Australia and is quality endorsed by NEAS.

Discover English is widely recognised in the international education industry in Australia as being an exceptional provider. Discover earned the Best New Examination Centre Award from Cambridge English Assessment in 2017 and was a finalist at the Victorian International Education Awards 2018 in the Excellence in International Student Experience Category.



KAZUKI HANYUDA, JAPAN

"What I really love about this school is that every single teacher is awesome! They always try to have fun and make conversation, plus they are interested in our background as international students.

Learning English in Japan is mainly focused on writing and grammar so students have fewer opportunities to speak. Discover English is more focused on communication skills and I feel that it has really improved my English faster because I have to speak a lot.

Also, this school offers lots of activities to really get to know the local culture. I'm a coffee lover and I truly enjoy the coffee scene and how it's part of the Melbournians' routine! I'm very happy living in this city".



Melbourne Lane



Discover English Campus



Student Lounge



Student Lounge

ABOUT DISCOVER ENGLISH



STUDENT CENTRED APPROACH

Students are at the centre of our organisation. We provide tailored options to ensure that each student is doing the course that's right for them. Our Academic Management team will help you to select a course based on your specific needs, be they academic, professional, skills-based or for communication in daily life.

Our open-door policy means that we always have time to discuss your course options and help you reach the next step in your educational goals. We welcome our students to try other classes and we have an efficient procedure in place if students wish to change course.



Check out what teachers & students say about our school

OUTSTANDING TEACHERS

The teachers at Discover English are truly remarkable people who, alongside their vast professional experience, bring their own unique style and individual flair to their classes. Amongst our teachers you'll find artists, musicians, writers, actors, filmmakers, academics, athletes, linguists, historians and more, many of whom have lived and travelled all over the world. Teachers take on classes best suited to their experience, qualifications, and personalities. Classes regularly go on fun and educational excursions with their teachers who take the time to connect with their students personally, providing helpful information about how best to experience life in Melbourne.

We aim to foster a culture of openness and honesty - students are very welcome to give input about the way their classes are run directly to their teacher.



KATHERINE CASTRO, COLOMBIA

"Before coming to Australia, I did some intensive research to decide my school. I watched a video about Discover English and it looked like a place where I could have friends from all over the world and speak a lot, that's why I chose this school. Now that I've been here for 6 weeks, I can see that the school makes a big effort to keep the diversity in the classes and that way I can make sure that I speak English all the time.

I also love that teachers are native speakers and they understand us as students. My plan is to finish my General English Advanced course and then take the IELTS preparation course because my goal is to apply for a scholarship to do a Master.

Being here is an amazing opportunity to know other cultures and open your mind, all in the same place, something that, otherwise, could take much time and many trips to achieve if you were in another country."

10 REASONS TO CHOOSE DISCOVER ENGLISH

- 1 Students come first
- 2 First class and personalised student services
- 3 10 hours of free classes/ teacher support each week
- 4 English Only campus in the best location in Melbourne
- 5 Finalist in many industry awards
- 6 Academic and fun approach
- 7 Opportunity to gain professional experience as a DE Ambassador
- 8 Morning and afternoon timetables
- 9 Caring staff and teachers
- 10 Cambridge and TOEIC exam centre

LIFE IN MELBOURNE

DISCOVER A NEW WAY OF LIVING...

Melbourne - a vivacious, internationally known city where people are free to be themselves, reinvent their lives and discover new passions in the fields of art, culture, music, food, fashion, sports and more.

Multiculturalism flourishes in Melbourne and whether you're looking for boutique shopping experiences, internationally famous art exhibitions or the spectacular beauty of the Australian natural landscape - you can discover it all in Melbourne.

Discover English is just minutes away from the ever-instagrammable Degraeves Street, the epicentre of renaissance coffee culture, Federation Square, a chic hotspot for art and events and, Queen Victoria Market, home to both the bustling summer and winter Night Markets.

Join our free walking tour on your first day

to discover the streets surrounding our beautiful heritage listed building (right in the middle of the Free Tram Zone!). Don't forget to snap a photo of Flinders Street Station, an iconic symbol of beauty and convenience #discoverenglish!

For seven years Melbourne held the title of World's Most Liveable City - come and discover what makes this city so magical and get ready to start the adventure of a lifetime!

ESTIMATION OF COSTS

Melbourne is a reasonably priced major city with a range of living options. As a guide, you will need a minimum of \$20,290* (not including tuition) per year to cover accommodation, daily living costs, health services and other expenses. The amount of money you bring is a personal choice, but you must ensure you have enough funds to cover certain typical expenses, for example:

Share accommodation	\$160 - \$300 p/w
Bond	4 weeks rent (payable as a deposit)
Monthly transport	\$150+
Monthly mobile phone plan	\$29
Coffee	\$3.50 - \$5.00
Lunch	\$6 - \$12
Grocery shopping per week	\$30-\$60

* All costs are indicative only and in Australian dollars.

Discover more about Melbourne watching this video



CARLOS BRIHUEGA, SPAIN

"Maybe the most important thing to me is the different cultures that you can find here. Talking to people from different countries and accents is the best way to learn English. When I have time, I usually go to the free extra classes such as listening, vocabulary, grammar, pronunciation and conversation. I also love the social activities because it's another kind of learning. It's a more relaxed atmosphere and you find people interested in the same things that you like. Something that I love is that here you can find food from all over the world and at all prices! Melbourne is a very functional city, you can move around walking or even free if you are within the free tram zone in the CBD.

For me, Business English has been perfect because I'd like to find a job as a business consultant. In this dynamic course, English gets real as you learn a lot about Australia by studying the news in the class!"



DISCOVER OUR CAMPUS

CAMPUS FEATURES AND FACILITIES

- Fantastic central location on Collins Street inside the Free Tram Zone
- Dedicated Student Activities Officer
- Dedicated Homestay Coordinator
- Own building with 6 floors - Free Wi-Fi
- 2 fully equipped computer labs
- Clarity software for online ESL learning and extension activities
- Modern and bright classrooms equipped with computers and projectors
- Student break areas & counselling rooms on each level
- Student kitchen and lounge
- Independent Learning Centre

Take a campus tour by watching this video



Classroom



Computer Lab



BARBORA PLZAKOVA, CZECH REPUBLIC

"I decided to undertake the C1 Advanced course to obtain a recognised qualification of my English level. During the course, I realised that not only was I being prepared for the test but also I was learning new language skills that I didn't have before such as more advanced vocabulary, fixed expressions, and complex grammatical structures. This has definitely been challenging but totally useful.

This course is more for those who are looking to reach the level required to grow professionally or to settle down in an English-speaking country, like Australia.

Besides, I always felt appreciated as a student, the attention from staff was always professional and remarkably honest.

I strongly believe they take the student's needs into account to offer them the best options to improve their English".



DISCOVER OUR COURSES

GENERAL ENGLISH

CRICOS: 073679D
 BEGINNER - ADVANCED (1 TO 70 WEEKS)
 START DATES: EVERY MONDAY

General English aims to develop students' English language skills with a focus on fluency and confidence. Through an integrated communicative approach, students practice reading, writing, listening and speaking. They are also taught the building blocks of grammar and learn to use them to interact in meaningful and useful ways. General English at Discover is tiered from Beginner to Advanced which means there is a level suitable for everyone. You will be carefully placed in a class that matches your level so you are challenged but not overwhelmed.

Our highly-qualified and friendly General English teachers have the skills required to foster learning in a practical and fun environment. The diverse range of activities means General English is the perfect course for making friends and developing English skills.



NO MINIMUM ENTRY

TIMETABLE: AM, PM

CAMBRIDGE FOUNDATION STREAM OF GENERAL ENGLISH

UPPER INTERMEDIATE (5 TO 10 WEEKS)
 START DATES: EVERY MONDAY

Cambridge Foundations is an intensive course aimed to prepare students for the challenges of our Cambridge B2: First preparation course. Cambridge Foundations uses an integrated communicative classroom approach alongside a comprehensive syllabus to develop not only language skills but also exam-taking strategies.

Cambridge Foundations students will study grammatical frameworks using real-world material in order to gain a thorough understanding of the intricacies of native English. The course is formative-assessment driven so students consistently receive feedback and can improve on their reading and writing skills.

This fast-paced course is ideal for students who are ready to work hard, be challenged and improve quickly.



MINIMUM ENTRY: IELTS 5.0 or equivalent

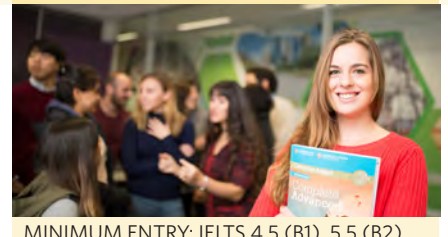
TIMETABLE: AM

CAMBRIDGE ESOL - B1:Preliminary / B2:First / C1:Advanced / C2:Proficiency

CRICOS: 074419E
 EXAM PREPARATION (10 TO 52 WEEKS)
 START DATES: JAN, MAR, JUN, SEPT

Our Cambridge ESOL courses are specially designed to prepare students for the Cambridge certificate examinations.

Cambridge certificates are valid for life and recognised by more than 11,000 employers, universities and government bodies worldwide. Cambridge certificate examinations are also based on practical, real-world English. Cambridge ESOL courses don't just teach students how to pass an exam, they provide students with more complex elements of English - such as phrasal verbs, colloquialisms, idioms and collocations, which are essential for any student who has a future professional life in English. Our Cambridge courses are small and closed classes and do not admit new students after the start date.



MINIMUM ENTRY: IELTS 4.5 (B1), 5.5 (B2), 6.0 (C1), 7.5 (C2)

TIMETABLE: AM

ENGLISH FOR ACADEMIC PURPOSES

CRICOS: 073678E INTERMEDIATE - ADVANCED (5 TO 31 WEEKS)
 START DATES: EVERY 5 WEEKS

With a special emphasis on formal writing, research and critical thinking, the English for Academic Purposes (EAP) course is designed to develop, practice and refine the skills necessary for further study in certificate, diploma, degree or post-graduate level courses in English.

Students will be guided through various academic processes such as research, developing a thesis statement, scaffolding an essay, and polishing written work to improve the overall standard of a paper. All of this will be done with constant feedback and suggestions so students will be prepared for entry into their chosen tertiary course.



MINIMUM ENTRY: IELTS 5.0 or equivalent

TIMETABLE: PM

BUSINESS ENGLISH

CRICOS: 073675G
 INTERMEDIATE - UPPER-INTERMEDIATE (1 TO 26 WEEKS)
 START DATES: EVERY MONDAY

Business English is a high level course that aims to prepare students with the English language skills needed to succeed in a modern corporate environment. With a high level of grammatical practice, Business English is the perfect course for motivated students who wish to expand their skill set.

Combining theory with a range of practical tasks, students develop the expertise required to liaise with clients and deliver presentations and reports. Business English explores a range of business-based topics with an emphasis on vocabulary and communicative skills.



MINIMUM ENTRY: IELTS 5.0 or equivalent

TIMETABLE: AM

IELTS PREPARATION

CRICOS: 076496J INTERMEDIATE TO ADVANCED (1-21 WEEKS)
 START DATES: EVERY MONDAY

The IELTS is currently the world's most popular English language proficiency test for people wishing to do higher education or migrate globally.

Our IELTS Preparation courses cover reading, writing, listening and speaking skill development for both the general and academic tests with a focus on the techniques needed to successfully achieve desired IELTS score outcomes.

IELTS Preparation at Discover English is taught by highly experienced teachers who truly understand the intricacies of the IELTS test and provide a high assumed knowledge of English grammar and vocabulary.



MINIMUM ENTRY: IELTS 5.0 or equivalent

TIMETABLE: PM

DISCOVER MORE...

ENGLISH + HOTEL INTERNSHIP*

MINIMUM ENTRY LEVEL: INTERMEDIATE AND ABOVE
PROGRAM DURATION: 6 MONTHS

Our English + Hotel Internship programme is a paid work-experience programme at a four-star hotel or resort in Australia. This course, designed for Working Holiday Visa holders, is a great way to practice English, learn new skills and earn a wage. Students can gain experience in the following roles: housekeeping, laundry, kitchen hand, personal assistant, cook, food and beverage attendant and maintenance. As you gain valuable work experience in the hotel industry, you will be working with Australian and International colleagues and potentially making lifelong friendships. The skills learned in our English + Hotel Internship course are transferable and will be useful in many modern, working environments.

ENGLISH + DEMI PAIR*

MINIMUM ENTRY LEVEL: INTERMEDIATE AND ABOVE
PROGRAM DURATION: 4 - 6 MONTHS

Our General English + Demi Pair programme is a fantastic way to immerse yourself in the English language and learn practical life skills while bonding closely with an Australian family. The benefits of the demi pair programme are numerous - there is no need to search for a job, home or friends as all of these things are embedded in the programme. The lifestyle is enough to keep you busy and active while still ensuring you have time to relax and explore the city. The necessity of speaking real-life English with your new family, which will be supported by classroom based learning, will ensure your skills improve rapidly. The General English + Demi pair programme is available to students with a permission to work visa.

ENGLISH + HOSPITALITY*

MINIMUM ENTRY LEVEL: INTERMEDIATE AND ABOVE
PROGRAM DURATION: 7 OR 17 WEEKS.

Hospitality and service is one of the biggest and most dynamic industries in Melbourne, a city with thousands of cafes, restaurants, bars and a major casino. The Discover English + Hospitality course combines quality English language learning and hands-on hospitality training to help get you started in your dream job. At the end of the course students will receive actual qualifications and certificates required to work in the highly regulated hospitality industry. Furthermore, students will be well prepared for the busy lifestyle of a Melbourne barista, waiter or bartender. Coffee and conversation are at the heart of the quintessential Melbourne life and with our English + Hospitality course you will be able to master both.

* These programs are available for students on a Working Holiday Visa only ** All courses at Discover English are subject to a minimum number of students

Morning and afternoon timetables give students greater flexibility. Students are allocated based on their English level, nationality mix and availability.

CLASS TIME	SUPERVISED SELF STUDY	EXTRAS
8.30am - 1pm / break time: 30 min	1pm - 2pm	2pm - 3pm
1.30pm - 5.45pm / break time: 15 min	11am - 12pm	12pm - 1pm

TIMETABLE

	GE	IELTS	CAMBRIDGE	EAP	BE	
COMMUNICATION SKILLS	■	■	■	■	■	KEY ■ Strong Emphasis ■ Regular Practice ■ Included
EVERYDAY GRAMMAR	■	■	■	■	■	
EVERYDAY ENGLISH	■	■	■	■	■	
ACADEMIC ENGLISH	□	■	■	■	■	
SPECIALISED LANGUAGE	□	■	■	■	■	
ASSESSMENT & FEEDBACK	■	■	■	■	■	
FORMAL LANGUAGE	□	■	■	■	■	
PRONUNCIATION	■	■	■	■	■	
READING & WRITING	■	■	■	■	■	
HAVING A GREAT TIME!	■	■	■	■	■	

SKILLS MAP

COURSE LEVEL	ENTRY LEVEL IELTS	GE	BE	EAP	IELTS	B1	CF	B2	C1	C2	EXIT LEVEL IELTS
MASTERY	7.5									■	8.0+
ADVANCED PLUS	6.5										7.0+
ADVANCED	6.0	■		■	■			■			6.5+
UPPER INTERMEDIATE	5.5		■	■	■		■	■			6.0+
INTERMEDIATE	5.0					■	■				5.5+
PRE INTERMEDIATE	4.5										
ELEMENTARY											
BEGINNER											

COURSE MAP

GE General English
BE Business English
EAP English for Academic Purposes

IELTS International English Language Testing System
B1 Preliminary
CF Cambridge Foundation

B2 First
C1 Advanced
C2 Proficiency

DISCOVER OUR DIFFERENCE

VOLUNTEERING

Teaching Assistant Program

Experience Australian schools and culture by assisting a teacher in developing and delivering bilingual language lessons.

The Conservation Volunteer Program

Join other students and local Australians on various regional environments and wildlife conservation projects.

DE AMBASSADORS PROGRAM

The DE Ambassadors Program enables students to bond more closely with our school by volunteering.

The ambassadors provide peer to peer support to new students and help them settle into our school.

The ambassadors ensure a welcoming experience from the beginning.



Watch the DE Ambassadors' video here

RAINBOW CONNECTION

At Discover English we take our students' welfare seriously, that's why we are a dedicated safe space - we do not tolerate bullying, discrimination or harassment of anyone regardless of their race, nationality, gender or sexual orientation. We are national leaders in the active support LGBTQI students with our Rainbow Connections program and transgender friendly bathrooms.



Rainbow Connections is a social welfare program for international students who are gay, lesbian, bisexual, transgender or identify in any way as queer or gender diverse. This program provides a valuable and rare opportunity for students to hang out, relax, get information about services,

programs and events in Melbourne for the queer community in a safe and welcoming space.

STUDY TOURS

Custom design your study tour! We deliver an unforgettable educational experience for international groups, providing a unique combination of tailored English language classes and fun, exciting activities and excursions. We will take care of all your needs including meet and greet services, accommodation, meals, transfers, transport, activities, excursions and welcome and farewell functions.

FURTHER STUDY

Discover English students have access to a number of further study options with our pathway partners. Our pathway plans are designed to boost your English skills before undertaking another Academic program.



Download our Pathways Plan here

PATHWAY PARTNERS



CRICOS: 02634E



CRICOS: 02439G



CRICOS: 03057C



CRICOS: 02411J



CRICOS: 03057C



CRICOS: 01590J



CRICOS: 00219C



CRICOS: 00231G



CRICOS: 00012G



CRICOS: 02386E



CRICOS: 01218G



CRICOS: 02386E



CRICOS: 00111D



CRICOS: 00724G



CRICOS: 03389E



CRICOS: 01505M

DISCOVER ENGLISH EXAM CENTRE

Discover English College is an official Cambridge and TOEIC Exam Centre. After completion of the exam preparation course students can take their exams in the comfort of our modern facilities and in the familiar environment.



Authorised Exam Centre

DISCOVER OUR WORLD

EXTRAS

Extras is a free one-hour elective run twice a day at Discover English. Perfect your pronunciation, boost your grammar, hone your listening skills and enjoy interesting conversations. Extra classes cater to all levels of English, are multidisciplinary and make use of a wide range of resources.

HOMework CLUB

Need a bit of extra help with your homework? A teacher is in our Independent Learning Centre during supervised self-study periods to assist with anything you might need. From tricky grammar to independent study to writing the perfect CV, our Homework Club is the perfect opportunity to find the answers to all your questions.

WEEKLY FEEDBACK & ONGOING ASSESSMENT

Teachers regularly provide students with feedback on their progress by collating weekly test scores and information observed in class. Students have ample opportunity to speak with their teachers about how to move forward to the next level by overcoming weaknesses and building on current strengths. The diversity of our assessment means students will not

just be answering grammar questions, but will also be giving presentations, creating posters, working in pairs and small groups, and of course speaking with their teacher one on one. Additionally students have the opportunity to move up to the next class any week by taking a level up test when they meet the requirements.

FLEXIBLE COURSE CHANGES

We have an extensive range of course options available for every student. If you are in any doubt about which course is the best for you we can assist you in finding the perfect fit for your needs, and, provided you have the right language level, you can easily move from one course to another.

ENGLISH ONLY!

Our entire campus is a dedicated ENGLISH ONLY ZONE - our staff and teachers are always listening! Speaking only in English is an essential part of your educational and social experience here in Melbourne so we encourage our students to take responsibility for keeping our school an English Only Zone - even when no teacher is around to remind you! If you need to speak your first language, we can show you our private rooms for doing so.



NANA KITADA, JAPAN

"I've been at Discover English for 6 months - I started on the pre-intermediate level and now I'm doing the upper-intermediate and I could find a different way to learn grammar. My favourite extra class is the conversation class because I can meet different kinds of students from other countries. I also like that I can give my opinion on different topics and that makes me feel more confident.

This experience has changed my life, I feel that I'm more easy going now, more open to other cultures and enjoy myself more. I love hanging out with my friends and enjoy the nightlife together!"

- | | | | | | | | | |
|-----------|----------------|-----------|--------|--------------|------------------|----------------|-------------|----------------|
| Albania | Chile | Finland | Iran | Lichtenstein | Netherlands | Poland | Slovenia | USA |
| Argentina | China | France | Italy | Macau | New Caledonia | Portugal | Spain | UAE |
| Austria | Colombia | Germany | Japan | Malaysia | New Zealand | Reunion Island | Sri Lanka | United Kingdom |
| Belarus | Congo | Greece | Kenya | Macedonia | Pakistan | Romania | Sweden | Uruguay |
| Belgium | Costa Rica | Hong Kong | Korea | Mauritius | Papua New Guinea | Russia | Switzerland | Uzbekistan |
| Brazil | Cuba | Hungary | Kuwait | Mexico | Peru | Saudi Arabia | Taiwan | Venezuela |
| Cambodia | Czech Republic | India | Lao | Myanmar | Philippines | Serbia | Thailand | Vietnam |
| Canada | Ecuador | Indonesia | Libya | Nepal | | Slovakia | Turkey | |

NATIONALITY MIX

STUDENT SUPPORT

SUPPORT IN YOUR LANGUAGE

Moving to a foreign country to learn a new language is an exciting but challenging experience. Even something as simple as opening a bank account may become a difficult task in a new country. Fortunately, we have kind and caring support staff from a range of language backgrounds to help you with any problems you might encounter.

We can support you in many areas including day-to-day life in Australia, finding your way around in a big city, and anything related to housing, medical issues, activities, and your studies. The emotional welfare of our students is extremely important and we strive to make you comfortable in your home away from home!



[Download our pre-arrival guide here](#)

ACADEMIC SUPPORT

At Discover English students always come first. We offer counselling and advice to assist you with your academic studies. Our Academic Department has an open door policy and you can talk to them about courses or future studies whenever you like.

WELFARE SUPPORT

Our dedicated Student Support Services staff is here to help you if you feel homesick, have personal problems or just want to talk.

BEGINNER BOOSTER

Learning a new language from scratch is very challenging - fortunately we have a special class to provide extra help to our Beginner students. Beginner Booster is provided for free to students who need personalised support.

DAILY ACTIVITIES

At Discover English, learning is not just about the classroom, it's also about meeting people from other countries, attending social activities, understanding Melbourne life and Australian culture. Discover English has regular fun social activities to suit a range of interests. Students can also sign up for weekend tours including; Yarra Valley winery tours, surfing lessons, and trips to the Great Ocean Road, Phillip Island and much more.

JOB CLUB

Discover work options with our weekly Job Club! It is a free session to assist students with finding work or looking for alternative work. Our two timetables mean students have greater opportunities to find work that fits in with their study commitments.



DANIELA GUEDES, BRAZIL

"One of the reasons I like Discover English is because I have friends studying at other English schools in Melbourne and I can see that they don't have the student support that I have here.

I feel comfortable to talk to the staff and I know they will help me. What I feel about Discover is that they always try to provide students with a real experience in Melbourne, not only learn English. I also consider that Discover's welfare programs like DE Ambassadors and Rainbow Connection are very positive.

For some students, the DE Ambassadors is the first experience they have being responsible for others and making a difference in their lives. As an Ambassador I can have new friends and I can be useful for other students too.

Also, if you are in a place that truly cares about you and respects you regardless of your beliefs, you are in a safe place".



ACCOMMODATION & OTHER SERVICES

Discover English is happy to assist you with finding accommodation in Melbourne:

HOMESTAY

The Discover English dedicated homestay coordinator approves all homestay providers and places students according to individual needs and preferences where possible. There are two options available:

HALF BOARD (includes breakfast and dinner weekdays and 3 meals on weekends).

ROOM ONLY (single room with no meals, but students have access to the kitchen).

BUDGET STUDENT RESIDENCE

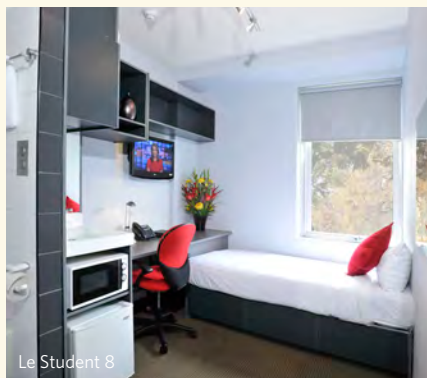
Student residence offers single-studio apartment type rooms for students who want to have an independent lifestyle.

All rooms are furnished and include an ensuite bathroom, bar fridge, microwave, work desk and LCD TV with Foxtel. For those looking to cook a meal, there is a communal kitchen area. Short term to long term stays available

PREMIUM STUDENT RESIDENCE

Iglu is a brand new, modern and funky student-only accommodation located in the CBD - 15 minutes walk to Discover English and within the Free Tram Zone.

Students can stay in their own fully furnished studio apartment or have their own bedroom in a shared student apartment.



Le Student 8



Iglu Bedroom

HOW TO APPLY

Complete the application form online directly on our website by scanning this code.

Alternatively, we can recommend an educational agent in your city to assist you.



HOLIDAYS

Discover English is closed for two weeks over the Christmas/New Year period. The college is also closed for all National and State Public Holidays including: Australia Day, Labour Day, Good Friday, Easter Monday, ANZAC Day, Queen's Birthday and Melbourne Cup (a full week's tuition is payable in weeks comprising public holidays, no refunds or discounts will be offered due to shortened weeks).

SCHOOL HOURS

The college is open from 8am to 6pm Monday to Friday. You have access to all college facilities between these hours, including the library, computer lab and student lounge.

OTHER SERVICES WE CAN ALSO ASSIST WITH:

- ✦ Airport transfers
- ✦ Medical insurance (OSHC)
- ✦ Work advice
- ✦ Backpacker recommendations
- ✦ Further study advice
- ✦ Introductions to private tutors
- ✦ Banking
- ✦ Tour/trip booking services



as part of Orientation

CONTACT US

247 Collins Street,
Melbourne, 3000, VIC, Australia

Tel: +61 3 9602 4800

Fax: +61 3 9602 4877

info@discoverenglish.com.au

www.discoverenglish.com.au

CRICOS PROVIDER CODE: 03262J | ABN: 83 142 642 742

The information in this brochure is correct at the time of publication. However, Discover English reserves the right to alter, amend or delete details at any time without notice. All images and content are subject to copyright. All images are property of Discover English (Oct 2018). Photos of Bells Beach and Mount Hotham from pixabay.com. This brochure is provided free of charge. For the most up-to-date course information please visit www.discoverenglish.com.au

Front cover: Mariana Lopez (student), Matthew Couper (teacher)

Follow Discover English on:



WHY STUDY ENGLISH IN MELBOURNE?

- 7 times named the most liveable city in the world!
- Cultural capital of Australia. Fashion & art is everywhere!
- Gastronomical capital of Australia. Find some of the best restaurants, bars and cafes in this city!
- Incredible and unique nightlife with a safe and inclusive atmosphere - night routes are available on public transport on the weekends to help you make the most of it!
- The 12 Apostles on the Great Ocean Road. Even if you don't like surfing, the view will take your breath away!
- One of the major surf championships in the world takes place only 2 hours away from Melbourne, at Bells Beach.
- Ski resorts and lots of snow only 3 hours from Melbourne - we also organise these tours!
- The Melbourne Cup is one of the most popular horse races in the world - experience the glamour!
- The F1 Grand Prix of Australia takes place in Melbourne. Albert Park is the beautiful venue for this event.
- The Australian Open is also a sports tradition in Melbourne and unites the world's best tennis champions in the city!
- Eureka Tower is one of the tallest buildings in Australia and you can admire the city view from the top!
- High quality public transport system with a Free Tram Zone and a wide selection of routes on the train, tram and bus.
- The median age of Melbourne's population is 28 years old, making it a young, vibrant city!

Visit our website to discover more about Discover English and Melbourne!



Southbank, CBD



12 Apostles, Vic



Bells Beach, Vic



Mount Hotham, Vic



discover ENGLISH



Authorised Exam Centre

