



► Student Guide

Brisbane
Perth
Manly Beach
Sydney

Your Australian study experience

Established in 1981, and proudly founded in Australia, Navitas English's story is best told through our students - it is your journey.

Australia is recognised as a great place to live and study, with its relaxed and friendly nature, unrivalled outdoor lifestyle, world-class education system, and high standard of living.

Considered in the top three most liveable countries¹, Australia is a vibrant and welcoming place where you'll make new friends from all over the world. With Australia's modern multicultural identity, there are over 200 cultures, speaking more than 300 languages in Australian homes².

While studying in Australia, you will have the opportunity to explore our beautiful country and the natural wonders of the landscapes that surround our cosmopolitan cities. Australia is blessed with stunning beaches, an outback with rugged mountain ranges and 19 world heritage listed sites³, including the iconic Great Barrier Reef and Uluru-Kata Tjuta National Park.

► Find out more: navitasenglish.edu.au/Australia

2nd most popular

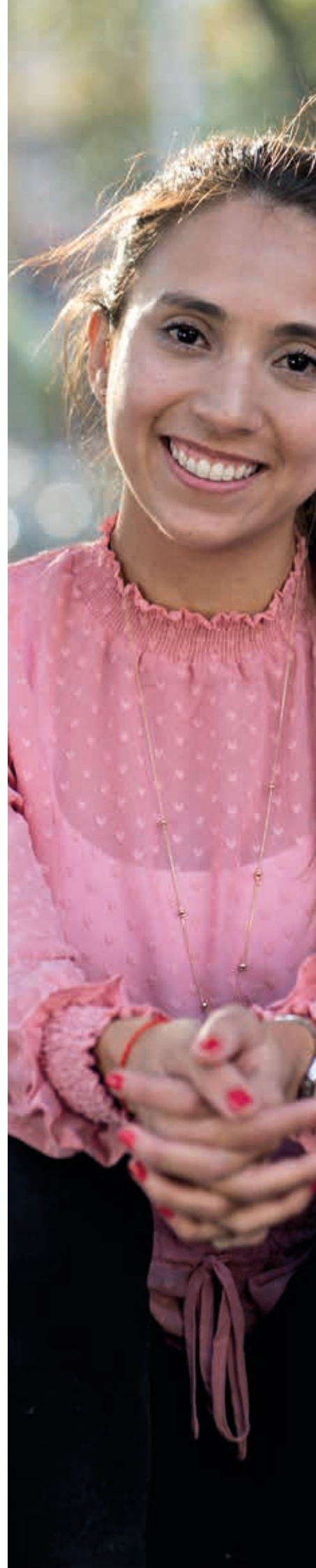
destination in the world for English students⁴

7 of the top 100

universities in the world⁵

4 of the 30 best

student cities in the world⁶





Contents

- 01 Your Australian study experience
- 03 Your destination for learning
- 04 Chantalle's story
- 05 Personal growth and pathway to a global career
- 05 Pathway to further education
- 06 Student services and support
- 06 Airport concierge and accommodation
- 06 Social activities and experience program
- 07-08 Selecting your new Australian city
- 09 Elvis' story
- 10 Brisbane
- 11 Manly Beach
- 12 Perth
- 13 North Metropolitan TAFE Perth
- 14 Sydney Hyde Park
- 15 Course finder
- 16 myStudy
- 17 Timetables
- 18 General English
- 19 Academic English
- 20 IELTS Preparation
- 21 Cambridge Preparation
- 22 Study Tours
- 23 Your pathway to further education
- 24 Our pathway partners
- 24 Lek's day-in-the-life
- 25 Entry requirements
- 26 Our application process
- 26 Navitas English Test Centre

1: <http://hdr.undp.org/en/2018-update>

2: <http://www.abs.gov.au/ausstats/abs@.nsf/lookup/Media%20Release3>

3: <https://whc.unesco.org/en/statesparties/au>

4: 2017 English Australia statistics

5: <https://www.topuniversities.com/university-rankings/world-university-rankings/2019>

6: <https://www.topuniversities.com/city-rankings/2018>

Your destination for learning

We create life-changing opportunities for students around the world to realise their education and career ambitions. Students who study English with Navitas can access world-class pathways into further education, advance career opportunities, and build a global network whilst embarking on a trip of a lifetime.

► **Pathways**

70+ direct entry agreements with universities, colleges and TAFEs in Australia and overseas

► **Student success rate**

92% pass rate for Academic English*

► **Founding member of English Australia**

The national peak body for English language education in the country


► **English test centres**

Three test operations across Australia

► **Diversity**

Learn English with students from over 100+ nationalities

*Navitas English and Testing 2018 Learning and Teaching Report



“The most important thing for students who really want to be able to speak English is to not stay in their own language community. I put effort into making new friends from different cultures.”

**Chantalle - Japan
General English and
Cambridge Preparation**

▶ Watch Chantalle's story
navitasenglish.edu.au/chantalles-story



Personal growth and pathway to a global career



Decide to travel and learn English

1

Set yourself a goal to travel and improve your English.



Choose location

2

Select your new Australian home/location and course with Navitas English.



Submit application

3

Submit your application via your nominated education agent or direct online at admissions@navitasenglish.edu.au



Start studying

4

Congratulations! Your journey in learning new skills and making global contacts to support your career and life goals, starts soon.



Pathway to further education



Decide to study in Australia

1

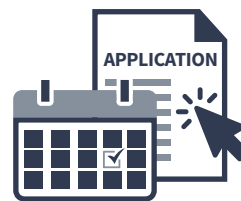
The dream is to study at a university, college or TAFE in Australia



Choose location and check requirements

2

Select your new Australian home/location, the best course for you and check the English entry requirements.



Book an English test and apply

3

With your goal in sight, take a test to determine your English level and submit your application to Navitas English via your nominated agent or direct.



Start studying

4

Celebrate your pathway to success! You can now use our Direct Entry Agreements to proceed directly to your university, college or TAFE course.

Student services and support

24/7 student support

We offer the support you need to get the most out of your time in Australia. If you have problems while studying at Navitas English, our campus staff are here to help and we have a 24/7 helpline for students.

Learning support

Improve your English with multimedia and online resources and take advantage of our self-study options to help develop your individual learning goals.

Student benefits

Take advantage of some special discounts, gym deals, or try a different Navitas English school with a free flight.

Job support

We support you to create your resume and with interview techniques and an online job portal, you're sure to succeed. While studying, work a maximum of 40 hours per fortnight which can pay towards living expenses.

Test centre

Over 38,500 candidates a year sit internationally recognised and accredited English language tests at one of our Navitas English Test Centres.

► **Find out more:**
navitasenglish.edu.au/services

Airport concierge and accommodation

Airport pick-up services

Want to be collected from the airport? Your driver will meet you and take you to your accommodation.

Homestay

You will experience a true Australian culture and lifestyle and become part of a local family, a great way to improve your English.

Independent and rental accommodation

We can help you organise independent accommodation in a guest house, hostel, hotel, student apartment or you can rent a property or a room in a house.

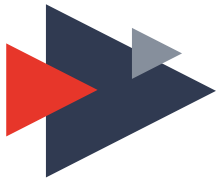
► **Find out more:**
navitasenglish.edu.au/welcome

Social activities and experience program

Boomerang

The Boomerang Social Activities and Experience Program offers our students a variety of fun, interesting and affordable things to do such as surf trips, beach BBQs and nature walks. It's a great way to make friends, practice your English and go sightseeing. Every Navitas English school has an activities coordinator to help you make the most out of your Australian experience.

► **Find out more:**
navitasenglish.edu.au/boomerang



Selecting your new Australian city

Experience more than one city in Australia for free with Airlink

Our Airlink program offers you a free flight between any two schools in the Navitas English network, helping you enjoy more of our beautiful country during your stay. To receive a free one-way flight between two of our Australian schools, study at least 17 weeks with us, with four weeks at the first school.

► **Find out more:**

navitasenglish.edu.au/airlink



► Brisbane, Queensland

The Sunshine State relaxed subtropical atmosphere



► Perth, Western Australia

The Wildflower State vitality and contemporary cool



► Manly Beach, New South Wales


The First State and
iconic beaches



► Sydney, New South Wales

The First State harbour
and stunning views





“Apart from learning English, you’re acquiring new knowledge and skills to make you a better person. I am now studying Master of Finance at university, that will lead to a good career with a big bank in Australia or any part of the world.”

Elvis - Brazil
General English,
Cambridge Preparation
and Academic English

► Watch Elvis' story
navitasenglish.edu.au/elvis-pathway

92%

of students recommend
Navitas English**

94%

of students rate our
teachers highly**

94%

of students rate their
course progress as
good to excellent**

**September 2018 National NPS Survey



Brisbane



Take the Brisbane campus tour

[navitasenglish.edu.au/](https://navitasenglish.edu.au/campus-tour/brisbane)

[campus-tour/brisbane](https://navitasenglish.edu.au/campus-tour/brisbane)

Study English in Brisbane, a relaxed riverside city with a subtropical climate in Australia's sunshine state.

For multicultural mix at its best, visit farmers' markets and sample delicious organic produce, or stroll down shopping streets and enjoy mouth-watering international cuisine. Brisbane is a beautiful and welcoming city, where the locals celebrate cultural diversity and the Australian way of life.

Navitas English Brisbane campus is situated in Cathedral Square, within easy walking distance of the city's food and shopping, Central Station and Fortitude Valley. Our modern building offers spacious classrooms with the latest technology, designated quiet study areas, computer rooms, a student lounge and an outdoor deck overlooking lush parkland.



Capacity
400



Classrooms
13



Average class size
16



Navitas English
Test Centre

Top five attractions:

1. Lone Pine Koala Sanctuary
2. South Bank
3. Mount Cootha
4. Gallery of Modern Art (GOMA)
5. Eat Street Northshore.

► Find out more:

navitasenglish.edu.au/schools/learn-english-in-brisbane





Take the Manly Beach
campus tour

[navitasenglish.edu.au/
campus-tour/manly-beach](https://navitasenglish.edu.au/campus-tour/manly-beach)



Manly Beach

Located on the east coast, Manly Beach is situated between a peaceful harbour beach and a popular Pacific Ocean surf beach.

Enjoy a seaside village lifestyle that seems like a thousand miles away from fast-paced Sydney, yet is only an 18-minute fast ferry away from the Sydney Opera House.

Navitas English Manly Beach is located in the heart of Manly, just a one-minute walk to the ocean. As one of Navitas English's boutique campuses, learn English in typically smaller classes with a great mix of nationalities and friendly and supportive staff. Enjoy sun-soaked activities after class, where you can swim, surf or just relax.



Capacity
315



Classrooms
8



Average class size
13

Top five attractions:

1. Walking along North Head
2. Surfing at Manly Beach
3. Shelly Beach
4. Manly Corso
5. Snorkelling at Fairy Bower.

► Find out more:

navitasenglish.edu.au/schools/learn-english-in-manly





Located on the west coast, Perth boasts sandy beaches, green parks, modern skyscrapers, trendy cafés and restaurants with beautiful colonial architecture.

Perth is known for its sunshine, friendly residents and affordability, providing you with a rich study experience and improved career prospects in one of the world's most liveable and affordable cities.

Navitas English Perth is located in the lively, multicultural suburb of Northbridge, only a five-minute walk from the city centre. Take a train to one of Perth's easily accessible, pristine beaches, and spend the day surfing, swimming or hanging out with friends.



Capacity
442



Classrooms
13



Average class size
14



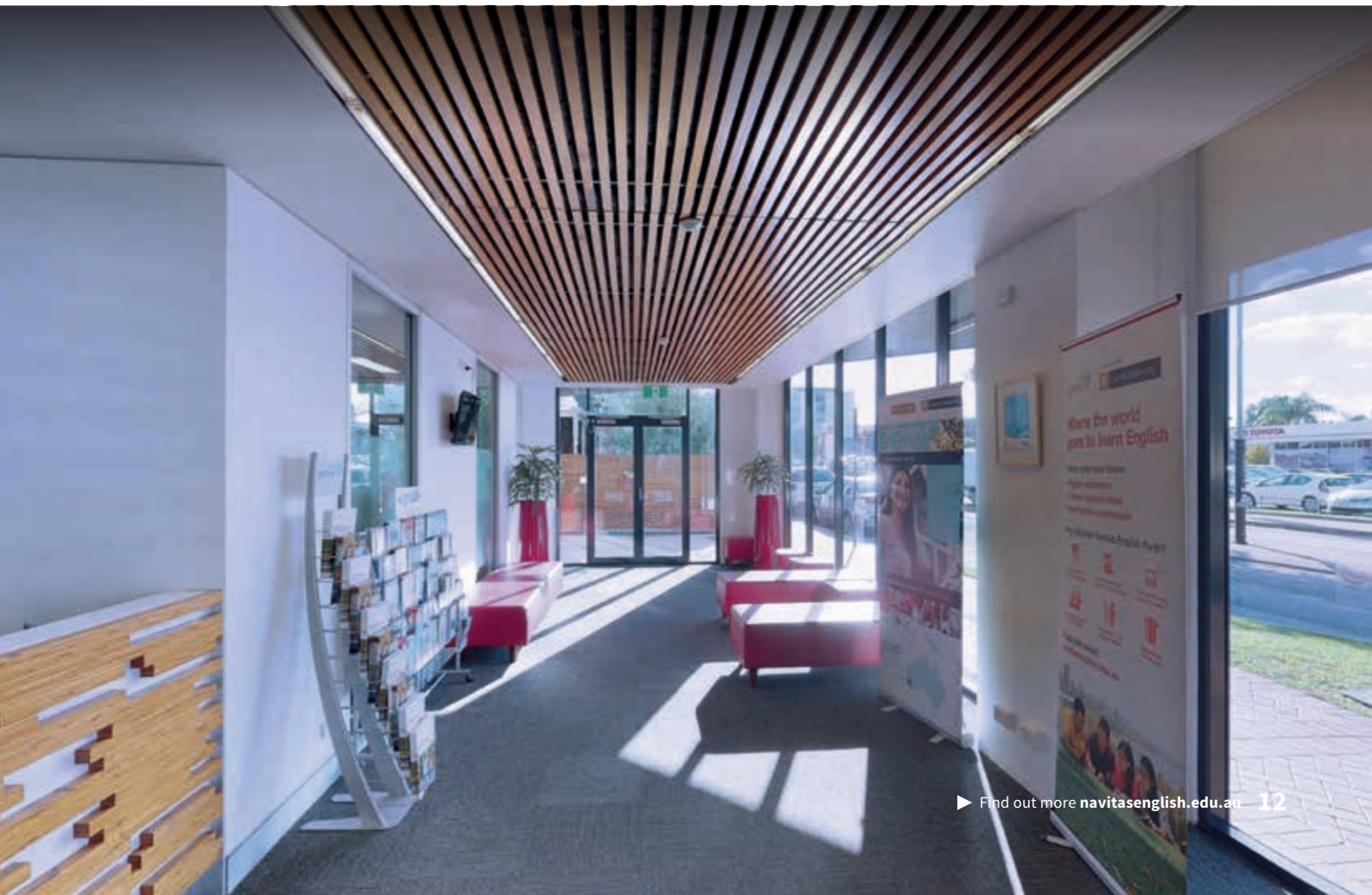
Navitas English
Test Centre

Top five attractions:

1. Rottnest Island
2. Cottesloe Beach
3. Kings Park
4. Fremantle
5. Swan Valley Region.

▶ **Find out more:**

navitasenglish.edu.au/schools/learn-english-in-perth





North Metropolitan TAFE Perth

Take the North Metropolitan
TAFE Perth campus tour
[navitasenglish.edu.au/
campus-tour/north-metro-
tafe-perth](https://navitasenglish.edu.au/campus-tour/north-metro-tafe-perth)

Study at Western Australia's North Metropolitan TAFE campus and enjoy access to the library, bookshop, cafes and a fitness centre, with great support services for academic and personal development.

After class, explore the vibrant cultural area of Northbridge, or enjoy the sunset over the Indian Ocean on one of Perth's beautiful beaches.



Capacity
324



Classrooms
9



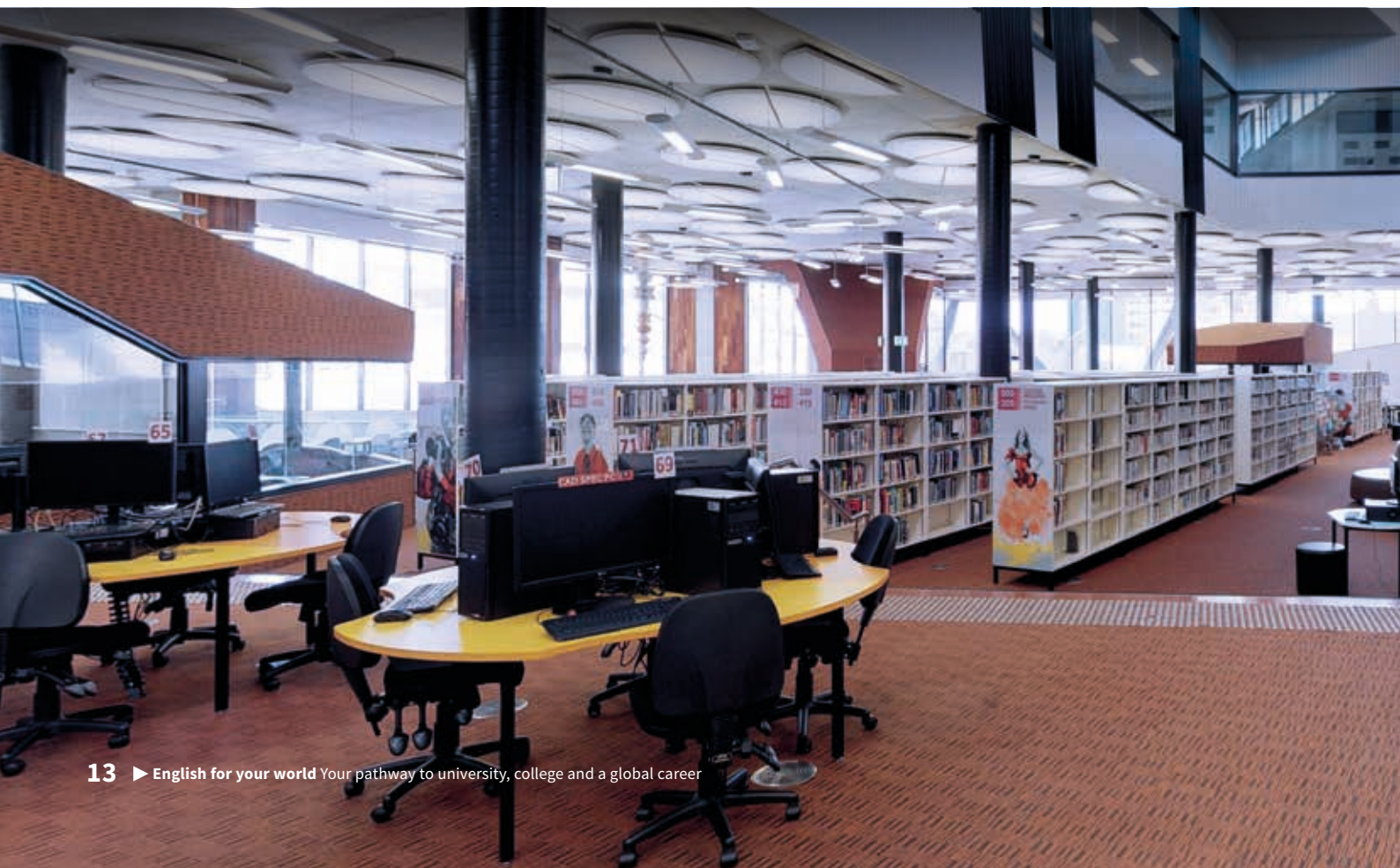
Average class size
13

Top five attractions:

1. Bell Tower
2. Elizabeth Quay
3. Perth Institute of Contemporary Arts
4. Perth Zoo
5. Scarborough Beach.

► Find out more:

[navitasenglish.edu.au/schools/learn-english-
at-north-metro-tafe-perth](https://navitasenglish.edu.au/schools/learn-english-at-north-metro-tafe-perth)





Sydney Hyde Park



Take the Sydney Hyde Park campus tour
navitasenglish.edu.au/campus-tour/sydney-hyde-park

Spectacularly wrapped around its magnificent natural harbour, Sydney's combination of surf beaches and iconic sights like the Opera House is stunning.

With an excellent transport system, you can easily explore the beautiful public gardens, historic islands and sparkling waterfronts. Our Sydney Hyde Park campus is a state-of-the-art education hub, and offers access to shared lecture theatres, a Student Resource Centre, innovative break out study areas and lounges. The building showcases contemporary educational design and is also home to the Australian College of Applied Psychology, La Trobe and Western Sydney University campuses.

Located opposite Hyde Park in the heart of Sydney, a tranquil green space with over 16 hectares of parklands, major shopping centres, popular food courts and Museum Station are all within a five-minute walk.



Capacity
600



Classrooms
17



Average class size
14



**Navitas English
Test Centre**

Top five attractions:

1. Sydney Opera House
2. Vivid Sydney
3. Royal Botanic Garden
4. Watsons Bay
5. Bondi to Coogee Walk.

► Find out more:

navitasenglish.edu.au/schools/learn-english-in-sydney



Course finder

We have English language schools across Australia with a range of courses to suit your English learning goals.

	Brisbane		Perth		North Metropolitan TAFE Perth		Manly		Sydney Hyde Park	
	Day	Evening	Day	Evening	Day	Evening	Day	Evening	Day	Evening
► Navitas English Programs										
General English 1 – A2 Elementary to B1 Pre-Intermediate	✓	✓	✓	✓			✓	✓	✓	✓
General English 2 – B1+ Intermediate to B2 Upper-Intermediate	✓	✓	✓	✓			✓	✓	✓	✓
General English 3 – B2+ Pre-Advanced to C1 Advanced	✓	✓	✓	✓			✓	✓	✓	✓
Academic English 1 – B1+ Intermediate					✓				✓	
Academic English 2 – B2 Upper Intermediate	✓				✓				✓	
Academic English 3 – B2+ Pre-Advanced to C1 Advanced	✓				✓				✓	
IELTS Preparation – Upper-Intermediate to Advanced	✓	✓	✓	✓				✓	✓	✓
Cambridge Preparation – PET	✓								✓	✓
Cambridge Preparation – FCE	✓	✓	✓	✓			✓		✓	✓
Cambridge Preparation – CAE	✓	✓	✓	✓			✓		✓	✓
Cambridge Preparation – CPE									✓	

CRICOS COURSE CODES: General English 1: 094518C, General English 2: 094519B, General English 3: 094520J, Academic English 1: 077031A, Academic English 2: 077032M, Academic English 3: 077033K, IELTS Preparation: 093053F, IELTS Preparation (Evening): 084191D, Cambridge Preparation – PET: 030816M, Cambridge Preparation – FCE: 030815A, Cambridge Preparation – CAE: 030817K, Cambridge Preparation – CPE: 030818J



myStudy is a guided individual learning program, structured and supervised by our professional English teachers.

myStudy allows you to focus on specific language skills and personal priority areas for development. myStudy also helps you develop independent study skills so you can continue to learn English at home after your course ends. Studying General or Academic English, join a myStudy option or use the time for assignments, homework and individual guidance from our staff.

For exam preparation courses, myStudy is often used for practice tests.



myStudy **Language**

Focus on areas of grammar and vocabulary you wish to improve using the language practice materials in the study room.



myStudy **Conversation**

Develop fluency and confidence in speaking English by talking about a wide range of useful topics with other students and a teacher.



myStudy **Job Club**

Prepare yourself to find part-time work in Australia by attending interactive workshops and tutorials about resume writing, interview techniques, and Australian workplace culture.



myStudy **Pronunciation**

We provide a lesson during myStudy to help you focus only on your pronunciation, improving fluency and building confidence in speaking.



myStudy **Computers**

Access ClarityEnglish language learning apps and other useful online language learning resources to study grammar, vocabulary and pronunciation, as well as develop reading, writing and listening skills.

Job Support

You can book two appointments for individual job support to help create your resume and to find work through an online job portal. With this one-to-one support, you're sure to succeed! While studying with us, work a maximum of 40 hours per fortnight which can pay towards living expenses.

Options available are subject to change.

► **Find out more:**
navitasenglish.edu.au/mystudy





Timetables

Your course may be offered on three different timetables:

▶ **Timetable 1 (day)**

**20 hours per week,
plus 5 hours myStudy**

Morning class 8.20–10.20am

Break 10.20–10.40am

myStudy options / exam practice 10.40–11.40am

Lunch 11.40am–12.30pm

Afternoon class 12.30–2.30pm

▶ **Timetable (Academic English at North Metropolitan TAFE Perth)**

**20 hours per week,
plus 5 hours myStudy**

Morning class 8.30–10.30am

Break 10.30–11am

Morning class 11am–1pm

Lunch 1–1.40pm

myStudy options / exam practice 1.40 – 2.40pm

▶ **Timetable 2 (day)**

**20 hours per week,
plus 5 hours myStudy**

Morning class 10.25am–12.25pm

Lunch 12.25–1.35pm

myStudy options / exam practice 1.35–2.25pm

Break 2.25–2.35pm

Afternoon class 2.35–4.35pm

▶ **Timetable 3 (evening)**

20 hours per week

Evening class 4.40–6.40pm

Break 6.40–7pm

Evening class 7–9pm

Courses are generally offered in this way, subject to change from time to time and during peak periods.

	Timetable 1 (Day)	Timetable 2 (Day)	Timetable 3 (Evening)
General English	✓		✓
Academic English	✓*	✓	
Cambridge Preparation	✓		✓
IELTS Preparation		✓	✓

CRICOS COURSE CODES

General English 1: 094518C, General English 2: 094519B, General English 3: 094520J, Academic English 1: 077031A, Academic English 2: 077032M, Academic English 3: 077033K, IELTS Preparation: 093053F, IELTS Preparation (Evening): 084191D, Cambridge Preparation – PET: 030816M, Cambridge Preparation – FCE: 030815A, Cambridge Preparation – CAE: 030817K, Cambridge Preparation – CPE: 030818J

*This is applicable to the Academic English timetable run at North Metropolitan TAFE campus only.

► General English

Course overview

Duration

Between 1 and 20 weeks per level

Mode of study

20 hours a week face-to-face on campus plus 5 hours of myStudy

Tuition Fees

Download our Tuition Fees: navitasenglish.edu.au/pricing

Prices are indicative and subject to change. Please contact your educational agent to learn more about our current promotions.

Start dates

Any Monday

Timetable[^]

8.20am–2.30pm
4.40–9pm

Entry requirements

Any level of English

A day one placement test

ensures you are placed in the optimal class for your English level

Visa

Student, Working Holiday, or Visitor

General English is offered at six levels:

General English 1

A2 Elementary
B1 Pre-Intermediate

General English 2

B1+ Intermediate
B2 Upper Intermediate

General English 3

B2+ Pre-Advanced
C1 Advanced

Learning outcomes

Our General English courses help you develop language skills for real-world situations and real-life communication. We help you develop the confidence to live, travel or work in Australia and other English-speaking countries, and to use English successfully at work. Graduate with English skills you can really use, plus a global network of friends and contacts.

► Find out more:

navitasenglish.edu.au/general-english

Sample lesson plan

Topic	Morning	▼ myStudy options	Afternoon
► Monday			
Reading: 'Plan or procrastinate?'	Vocab+: • organisation Grammar and listening: • The Future (Plans)		Learn to: • use notes BBC Media: • YouTube 'The future of TV?'
► Tuesday			
Review: Speak Out Extra activities	Reading: • 3D Printers Grammar and vocab: • future time markers and predictions		Speaking: • The world in 2040 infographic Pronunciation: • identify word stress
► Wednesday			
Warm up: gadgets	Functions: • dealing with misunderstandings Vocab+: • introduction to idioms		Learn to: • reformulate Project create: • YouTube Channel
► Thursday			
Review: video 'relocating'	Writing: • A company proposal Reading: • The Future of Language Learning		Speaking: • negotiation role play BBC Media: • Uber and Disruption
► Friday			
Lookback: Unit revision	Grammar: • future forms review Listening: • The Future Eaters (Tim Flannery)		Writing: • reflective journal Planning: • apply new learning techniques

[^]Timetables are subject to campus location and change.

CRICOS COURSE CODES

General English 1: 094518C, General English 2: 094519B, General English 3: 094520J

► Academic English

Course overview

Duration

10 weeks per level

Mode of study

20 hours a week face-to-face on campus plus 5 hours of myStudy electives

Tuition Fees

Download our Tuition Fees: navitasenglish.edu.au/pricing

Prices are indicative and subject to change. Please contact your educational agent to learn more about our current promotions.

Start dates

Regular intakes throughout the year. Visit: navitasenglish.edu.au/course-calendar

Timetable[^]

8.30am-1pm[^]

10.25am-4.35pm

Entry requirements

Intermediate+
(from IELTS 4.5 - see page 39)

A pre-course qualifying test is strongly recommended

Visa

Student, Working Holiday, or Visitor

Academic English is offered at three levels:

Academic English 1

B1+ Intermediate

Academic English 2

B2 Upper Intermediate

Academic English 3

B2+ Pre-Advanced to
C1 Advanced

Learning outcomes

Develop the English skills and literacies required for success in further study at university, college and TAFE. Use English language competently in academic contexts and take charge of your progress:

- Confident note-taking for lectures and tutorials.
- Understand resource lists and analyse key concepts in texts.
- Participate in group projects and present confidently in seminars.
- Interpret assessment tasks and structure assignments effectively.

Sample lesson plan

Focus	Morning	▼	Afternoon
myStudy elective hour			
► Monday			
Note taking, research, oral presentation	Listening: <ul style="list-style-type: none"> • WSU live lecture Skills development: <ul style="list-style-type: none"> • identifying attitude, clarifying specific information 		Grammar: <ul style="list-style-type: none"> • comparative adjectives Small group activity: <ul style="list-style-type: none"> • brainstorming for week 5 presentation information Moodle: <ul style="list-style-type: none"> • introduction
► Tuesday			
Planning writing, internal referencing	Reading: <ul style="list-style-type: none"> • La Trobe lecturers on planning written work Running dictation: <ul style="list-style-type: none"> • grouping main ideas 		Language development: <ul style="list-style-type: none"> • internal referencing, nouns and pronouns Writing: <ul style="list-style-type: none"> • paragraph writing activity
► Wednesday			
Editing, plagiarism and paraphrasing	Partner activity: <ul style="list-style-type: none"> • editing homework Language development: <ul style="list-style-type: none"> • use of correction and marking codes 		Reading: <ul style="list-style-type: none"> • how to avoid plagiarism, citing your source Paraphrasing: <ul style="list-style-type: none"> • summarising and plagiarism Assessment: <ul style="list-style-type: none"> • rating student responses
► Thursday			
Note-taking, relative clauses, reading skills	Listening: <ul style="list-style-type: none"> • note-taking masterclass with the Academic Director Language development: <ul style="list-style-type: none"> • relative clauses 		Small group activity: <ul style="list-style-type: none"> • give me a clue Reading: <ul style="list-style-type: none"> • The Sea Bear of the North Moodle: <ul style="list-style-type: none"> • navigation
► Friday			
Comparing, guided writing	Reading: <ul style="list-style-type: none"> • note-taking from a factual text Language development: <ul style="list-style-type: none"> • comparative structures 		Guided writing: <ul style="list-style-type: none"> • The Green Sea Turtle Energy management: <ul style="list-style-type: none"> • 'The Countries' game Moodle: <ul style="list-style-type: none"> • Turnitin submission

[^]8.30am-1pm timetable runs at North Metropolitan TAFE Perth only.

Timetables are subject to campus location and change.

CRICOS COURSE CODES:

Academic English 1: 077031A, Academic English 2: 077032M, Academic English 3: 077033K

► Find out more:

navitasenglish.edu.au/academic-english

► IELTS Preparation

Course overview

Duration

Between 1 and 25 weeks

Mode of study

20 hours a week face-to-face on campus plus 5 hours of test practice (Day)

20 hours a week face-to-face on campus (Evening)

Tuition Fees

Download our Tuition Fees: navitasenglish.edu.au/pricing

Prices are indicative and subject to change. Please contact your educational agent to learn more about our current promotions.

Start dates

Any Monday

Timetable[^]

8.20am-2.30pm[^]

10.25am-4.35pm

4.40pm-9pm

Entry requirements

Intermediate+

A pre-course qualifying test

is strongly recommended to guarantee a place in the course

Visa

Student, Working Holiday or Visitor.

The IELTS Preparation course gives you the skills you need to succeed with IELTS, one of the world's leading exams for university entry, career advancement and migration.

Learning outcomes

Secure your best IELTS score by developing skills and strategies, including:

- Listening for specific information and taking notes.
- Reading to understand attitudes and inferences.
- Understanding graphs, tables and charts.
- Expressing your ideas clearly and effectively in writing tasks
- Speaking with confidence and structure.

► Find out more:

navitasenglish.edu.au/IELTS

Sample lesson plan

	Morning	▼	Afternoon
► Monday	Team building: <ul style="list-style-type: none"> • find someone who... Introduction to IELTS: <ul style="list-style-type: none"> • course overview • individual objectives • manage your energy and your time 	Exam practice	IELTS Skills development: <ul style="list-style-type: none"> • vocabulary workbooks Vocab++: <ul style="list-style-type: none"> • word formation Writing skills: <ul style="list-style-type: none"> • test form
► Tuesday	Exam skills: <ul style="list-style-type: none"> • error correction from practice test Reading skills: <ul style="list-style-type: none"> • reading for gist vs. for specific information 		Language development: <ul style="list-style-type: none"> • passives Critical thinking: <ul style="list-style-type: none"> • an introduction
► Wednesday	Speaking skills: <ul style="list-style-type: none"> • talking about personal interests Listening skills: <ul style="list-style-type: none"> • Case Study - Sao Paulo 		Writing skills: <ul style="list-style-type: none"> • interpreting data Academic style: <ul style="list-style-type: none"> • formality
► Thursday	Language development: <ul style="list-style-type: none"> • comparative forms Reading skills: <ul style="list-style-type: none"> • distinguishing fact from opinion 		Exam skills: <ul style="list-style-type: none"> • effective time management under pressure Critical thinking: <ul style="list-style-type: none"> • what is an argument?
► Friday	Revision: <ul style="list-style-type: none"> • writing and grammar from homework, passives, sequencing Speaking skills: <ul style="list-style-type: none"> • stereotypes and social media 		Listening skills: <ul style="list-style-type: none"> • making the most of your memory Academic style: <ul style="list-style-type: none"> • signposting

[^]8.20am-2.30pm timetable runs at Perth campus only. Timetables are subject to campus location and change.

CRICOS COURSE CODES

IELTS Preparation: 093053F, IELTS Preparation (Evening): 084191D



Book an IELTS test with Navitas English Test Centre

► Cambridge Preparation

Course overview

Duration

Between 10 and 12 weeks

Mode of study

20 hours a week face-to-face on campus plus 5 hours of test practice

Tuition Fees

Download our Tuition Fees: navitasenglish.edu.au/pricing

Prices are indicative and subject to change. Please contact your educational agent to learn more about our current promotions.

Start dates

Regular intakes throughout the year. Visit: navitasenglish.edu.au/course-calendar

Timetable ^

8.20am–2.30pm

4.40–9pm

Entry requirements

Intermediate+

A pre-course qualifying test

is strongly recommended to guarantee a place in the course

Visa

Student, Working Holiday or Visitor

Cambridge Preparation is offered at four levels:

- PET
- FCE
- CAE
- CPE.

Learning outcomes

Cambridge English certificates are recognised by companies, governments and universities around the world.

Achieve your best grade by:

- Improving listening skills across a range of texts and genres.
- Sharpening reading skills to identify answers quickly and accurately.
- Speaking with accuracy, developing your pronunciation and control.
- Producing written texts, including letters, emails, and reports.

► Find out more:

navitasenglish.edu.au/Cambridge

Sample lesson plan

	Morning	▼	Afternoon
► Monday	Exam overview: <ul style="list-style-type: none"> • papers, task types and timing Study skills: <ul style="list-style-type: none"> • lifestyle and prioritising 	Exam practice	Listening part 1: <ul style="list-style-type: none"> • Tanya Streeter, Free Diver Use of English part 4: <ul style="list-style-type: none"> • key word transformations
► Tuesday	Writing part 1: <ul style="list-style-type: none"> • story sequencing Grammar: <ul style="list-style-type: none"> • forms and infinitives 		Use of English part 2: <ul style="list-style-type: none"> • Designer Water, task analysis and technique Speaking part 2: <ul style="list-style-type: none"> • comparing photographs
► Wednesday	Reading part 1: <ul style="list-style-type: none"> • identifying the topic Expert exam strategy: <ul style="list-style-type: none"> • identifying opinion and agreement 		Grammar: <ul style="list-style-type: none"> • adjective and noun collocations Writing part 2: <ul style="list-style-type: none"> • article, paragraph topics
► Thursday	Listening part 3: <ul style="list-style-type: none"> • photography and the media Use of English part 2 <ul style="list-style-type: none"> • Elon Musk and TESLA 		Expert exam strategy <ul style="list-style-type: none"> • responding to ideas and opinions Speaking part 3: <ul style="list-style-type: none"> • innovation and entrepreneurship
► Friday	Grammar: <ul style="list-style-type: none"> • forming adjectives with suffixes Writing part 1: <ul style="list-style-type: none"> • model answer analysis 		Week in review: <ul style="list-style-type: none"> • most common errors Week in review: <ul style="list-style-type: none"> • your revision requests The weekend ahead: <ul style="list-style-type: none"> • Self-study masterclass

^Timetables are subject to campus location and change.

CRICOS COURSE CODES

Cambridge Preparation – PET: 030816M

Cambridge Preparation – FCE: 030815A

Cambridge Preparation – CAE: 030817K

Cambridge Preparation – CPE: 030818J



Talk to a senior teacher about taking your Cambridge test with Navitas English Test Centre.



Study Tours

▶ Watch our Study Tour
navitasenglish.edu.au/study-tour

Prepare for your future overseas study

Our Study Tours are designed for you to enjoy an Australian adventure in a safe and fun environment. As well as an ideal way for you to sightsee, make new friends and discover the Australian way of life, while experiencing first-hand life as a Navitas English student in our intensive English language classes.

Take up your cultural exchange at any one of our Navitas English campuses in Brisbane, Manly, Perth or Sydney.

How we enrich your Australian experience

- interactive and fun English lessons
- age of student for closed class from 13 years or above and open class from 15 years
- minimum group size of 10 students
- after class activities from sightseeing to food experience
- full day weekend excursions
- university, school or industry tours
- tailored program available to meet your needs.

Types of activities on offer



Sightseeing

Take a walk to the Sydney Opera House or go on a boat trip in the Brisbane river.



Nature

Visit koalas and kangaroos or take the Manly coastal walk.



Food experience

Enjoy an Australian BBQ or visit Fremantle food market.



Culture

Visit a museum or learn to play the didgeridoo.



Sport

Go kayaking or play beach volleyball.



Fun

Play laser tag, watch a movie or take a ride on a roller coaster at Luna Park.



Educational

Complete a barista or first aid course.

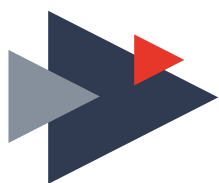


School/industry visit

Go on a university campus tour or high school academic observation.

▶ **Get your custom itinerary and quote at:**
english@navitas.com

▶ **Find out more:**
navitasenglish.edu.au/younger-overseas-student-policies



Your pathway to further education

Navitas English gives you direct entry to many of Australia's best universities, colleges and TAFEs.

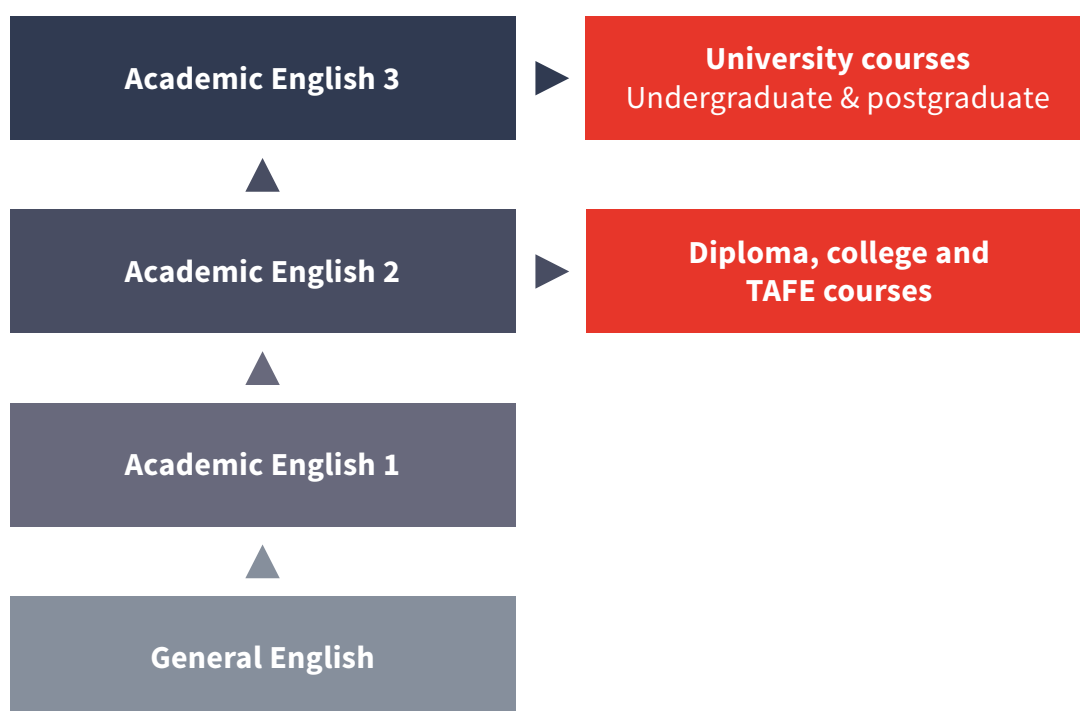
Knowing where you are (your current level of English) and where you want to go (the English language entry requirements of your university, college or TAFE course) will determine your study pathway.

Your English progression is directly linked to the time and effort you invest into your studies.

Motivated, hardworking students can generally expect to progress at the equivalent of 0.5 IELTS Band for each 10 weeks of study. Navitas English teachers and support staff work closely with you to make sure you have the best chance of achieving your English language entry requirements on time.

Every student's pathway is unique, and our expert Admissions team will advise you of the best study plan to meet your learning objectives and access your future.

Typical pathways include:



CRICOS COURSE CODES

Academic English 1: 077031A

Academic English 2: 077032M

Academic English 3: 077033K

General English 1: 094518C

General English 2: 094519B

General English 3: 094520J

“The strong point about Navitas are the connections with universities in Australia. I chose to study many courses at Navitas English because I believe in the quality.”

Lek - Thailand

General English, IELTS Preparation and Academic English

▶ Watch Lek's Day-in-the-life
navitasenglish.edu.au/leks-day

Our pathway partners

Navitas English has over 70 direct entry agreements with universities, colleges and TAFEs, providing pathways to Certificate, Diploma, Bachelor and Master's degrees.

Students who successfully complete Academic English courses meet our partners' English language requirements and do not need to take IELTS or other tests.



Subject to change and campus variations

▶ Find out more: navitasenglish.edu.au/direct-entry-agreements

▶ Find out more navitasenglish.edu.au **24**



Entry requirements

To ensure your class best matches your English levels, on your first day at Navitas English you will take a short test before placement.

Some courses require a minimum level of English for entry:

Minimum English level:	Prepares you for:
► General English	
<ul style="list-style-type: none"> No minimum If you are a beginner (below CEFR A1) please contact us for study advice. 	<ul style="list-style-type: none"> Academic English and Exam Preparation courses Using English for travel and work
► Academic English 1	
<ul style="list-style-type: none"> Navitas Academic English Entry Test: pass IELTS Academic: 4.5 overall (writing 4.5, other bands 4.0) Pearson PTE Academic: 30 (writing 30, other skills 24) TOEFL iBT: 34 (writing 12) Versant: 38 (writing 38, other skills 34) 	<ul style="list-style-type: none"> Academic English 2
► Academic English 2	
<ul style="list-style-type: none"> Successful completion of Academic English 1 IELTS Academic: 5.0 overall (writing 5.0, other bands 4.5) Pearson PTE Academic: 36 (writing 36, other skills 30) TOEFL iBT: 40 (writing 14) Versant: 46 (writing 46, other skills 42) 	<ul style="list-style-type: none"> Academic English 3 Certificate, Diploma and Foundation programs
► Academic English 3	
<ul style="list-style-type: none"> Successful completion of Academic English 2 IELTS Academic 5.5 (writing 5.5, other bands 5.0) Pearson PTE Academic 42 (writing 42, other skills 36) TOEFL iBT: 55 (writing 16) Versant: 50 (writing 50, other skills 46) 	<ul style="list-style-type: none"> Advanced Diploma courses Bachelor and Master's degrees
► IELTS Preparation	
<ul style="list-style-type: none"> Navitas IELTS Entry Test: pass IELTS 5.0 	<ul style="list-style-type: none"> IELTS Exam
► Cambridge Preparation – PET	
<ul style="list-style-type: none"> Navitas Cambridge Entry Test: Pass IELTS 4.0 or Cambridge English Scale 130 	<ul style="list-style-type: none"> Cambridge PET exam B1 Preliminary shows you can communicate satisfactorily in most everyday situations with both native and non-native speakers of English and is ideal preparation for B2 First.
► Cambridge Preparation – FCE	
<ul style="list-style-type: none"> Navitas Cambridge Entry Test: Pass IELTS 5.0 or Cambridge English Scale 150 	<ul style="list-style-type: none"> Cambridge FCE Exam B2 First shows you have the language skills needed to communicate confidently in an English-speaking environment.
► Cambridge Preparation – CAE	
<ul style="list-style-type: none"> Navitas Cambridge Entry Test: Pass IELTS 6.0 or Cambridge English Scale 170 	<ul style="list-style-type: none"> Cambridge CAE Exam C1 Advanced is proof of high-level achievement in English and the ideal qualification to prepare you for university or professional life.
► Cambridge Preparation – CPE	
<ul style="list-style-type: none"> Navitas Cambridge Entry Test: Pass IELTS 7.0 or Cambridge English Scale 190 	<ul style="list-style-type: none"> Cambridge CPE Exam C2 Proficiency is our highest level qualification and shows the world you have mastered English to an exceptional level.

CRICOS COURSE CODES: General English 1: 094518C, General English 2: 094519B, General English 3: 094520J, Academic English 1: 077031A, Academic English 2: 077032M, Academic English 3: 077033K, IELTS Preparation: 093053F, IELTS Preparation (Evening): 084191D, Cambridge Preparation – PET: 030816M, Cambridge Preparation – FCE: 030815A, Cambridge Preparation – CAE: 030817K, Cambridge Preparation – CPE: 030818J

► Find out more:
navitasenglish.edu.au/courses/english-levels



Our application process

Step 1

► Download and complete the application form

navitasenglish.edu.au/assets/agent-downloads/ApplicationForms/Navitas-English-Application-Form.pdf

Step 2

► Submit your completed application form

Include certified copies of the supporting documents. (see checklist below)

Checklist

- a copy of your current passport
- a copy of your current Australian visa (if you hold one)
- a copy of your further studies offer to an Australian institution: university, foundation studies or TAFE (if you hold one)
- a copy of your official English test result (if available).

Step 3

► Receive an offer letter from Admissions

A Navitas English Admissions Officer will assess your application and issue your offer letter.

Step 4

► CoE issuance

Receive an electronic Confirmation of Enrolment if you are coming on a student visa.

*A certified copy is a copy of the original document signed and dated by the organisation that issued the original document, a government official, Public Notary of Justice of the Peace, or an agent of Navitas English, confirming that they have sighted the original.



Navitas English Test Centre

Whether your goals are to improve your future career prospects at home or abroad, gaining an internationally recognised English language qualification is fast and simple at one of our three Navitas English Test Centres, on campus in Brisbane, Perth and Sydney, as well as in Adelaide in conjunction with SAIBT.

NETC advantages

NETC offers ease of access for all Navitas English students to get your credentials wherever you are studying. This includes the entire range of English language proficiency tests currently accepted by the Australian Government:

- Cambridge C1 Advanced
- IELTS
- Occupational English Test
- PTE Academic
- TOEFL iBT.

We also offer B1 Preliminary, B2 First and C2 Proficiency from the Cambridge Assessment English suite of exams.

► Find out more:
navitastesting.com

NETC global test organisation partners

- IDP IELTS Australia
- Pearson VUE
- Cambridge Boxhill Language Assessment
- Cambridge Assessment English
- ETS TOEFL.



- Trusted partner
- Extensive testing experience
- Excellent candidate rating
- Convenient
- Recognised credentials

Part of the Navitas Group



English for your world

Your pathway to university, college and a global career

Head Office

**Level 4, 255 Elizabeth Street
Sydney NSW 2000 Australia
T +61 2 8246 6800
E english@navitas.com**

Brisbane

**Ground Floor – East Tower
410 Ann Street
Brisbane QLD 4000 Australia
T +61 7 3031 0500**

Manly

**5–7 Raglan Street
Manly NSW 2095 Australia
T +61 2 8234 1444**

North Metropolitan TAFE Perth

**ELICOS Reception - Desks 1 & 4
Level 2, 25 Aberdeen Street
Northbridge WA 6003 Australia
T +61 8 9427 1096**

Perth

**211 Newcastle Street
Northbridge WA 6003 Australia
T +61 8 6330 1600**

Sydney Hyde Park

**Level 3, 255 Elizabeth Street
Sydney NSW 2000 Australia
T +61 2 8246 6800**

Courses are delivered by Navitas English Services Pty Ltd (ACN 002 069 730), CRICOS Provider Code 00289M. The information contained in this brochure is correct at the time of publication, however, Navitas English reserves the right to alter, amend or delete details at any time without notice.

Selected photographs in this publication are:
Copyright © Dean Whitting 2018

This brochure is provided free of charge.

Printed January 2020

NAVE181207-827 0120_AW