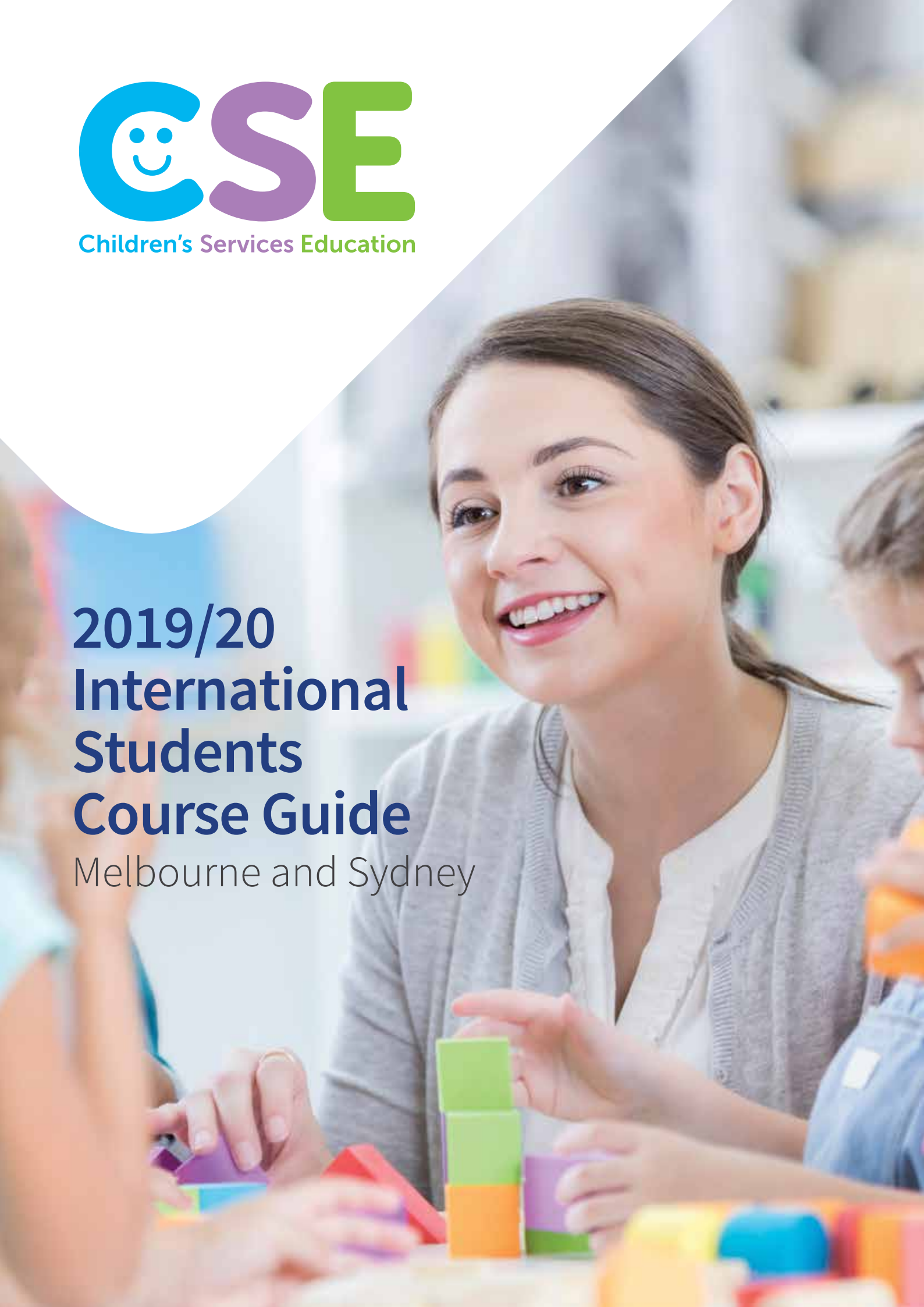




Children's Services Education

# 2019/20 International Students Course Guide

Melbourne and Sydney



# Welcome to Children's Services Education

Children's Services Education (CSE) is a Registered Training Organisation (RTO Code: 45514) and specialist provider of nationally accredited Early Childhood Education and Care qualifications. It was formerly known as MEGT Institute (RTO Code: 3945). Every year, our Melbourne and Sydney campuses welcome students from over 30 different countries.

## The CSE difference

- Children's Services Education is recognised as a specialist training provider and we have a strong industry-wide reputation for quality graduates
- We provide practical, hands-on training to give you the skills you need to succeed
- We have a network of over 500 registered childcare centres, so we can help you find the most suitable vocational placement to get you well on the way to a rewarding career in children's services
- Our industry-experienced trainers are highly qualified, and passionate about ensuring you achieve your academic and career goals
- You will have the opportunity to gain employment in a childcare service while you study

## Our campuses

Our Melbourne and Sydney Campuses are centrally located in the heart of each CBD, with public transport, cafes, restaurants and shops all close by.

Both of our modern campuses have:

- Spacious student common rooms with free Wi-Fi
- Computer labs with plenty of computers available for students
- Purpose-built Play Session training centre
- Onsite kitchen and dining facilities

Monthly social events organised by our Student Services team give you the opportunity to meet other students, make friends, share your learning experiences and explore your new city.



# Certificate III in Early Childhood Education and Care

Course code: CHC30113 CRICOS course code: 0100378

Want a rewarding career where you can be an important part of children's development and learning? With our accredited CHC30113 Certificate III in Early Childhood Education and Care and extended vocational placement program you can gain the knowledge, skills and experience to be ready for employment. This course covers both the theory and hands-on experience of child development and learning, care-giving and supporting children's wellbeing. The course content covers babies, toddlers, and young children.

## Practical skills

Training is hands on, interactive and fun. Practical skills are developed through workshops including simulated practice, demonstrations, and guest presenters from industry, field trips and vocational placements where you can practice learnt skills.

Training involves a combination of classroom learning, resource development, online learning, practical sessions, research and project work plus vocational placement in a registered education and care service. We utilise a range of assessment methods including demonstration/direct observation of the student at vocational placement, written reports, training records, written tests, work samples, questions and discussions and projects. Students will need to be marked satisfactory in all assessments to successfully pass the course.

We arrange each student's vocational placement with a registered education and care service providers. Students complete vocational placement assessments facilitated by their trainer.

## Career outcomes

Successful completion of this qualification may lead to:

- Early Childhood Assistant Educator
- Family Day Care Educator
- Out of School Hours Care (OSHC) Assistant Educator

Delivery mode	Location	Duration	Timetable	Vocational Placement
On campus Full-time blended	Melbourne CBD or Sydney CBD	39 weeks, including 30 weeks of tuition and up to 9 weeks break	On campus 2 days per week 8.30am to 4.45pm. Tutorials 3 hours per week. Online learning average 5 hours per week during campus weeks	Includes 24 days (8 hours per day; total of 192 hours), 3 days per week over 8 vocational placement weeks

## Units undertaken for this qualification

Unit code	Unit title	Unit code	Unit title
CHCDIV001	Work with diverse people	CHCECE011	Provide experiences to support children's play and learning
CHCECE001	Develop cultural competence	CHCECE013	Use information about children to inform practice
CHCECE002	Ensure the health and safety of children	CHCPRT001	Identify and respond to children and young people at risk
CHCECE003	Provide care for children	HLTAID004	Provide an emergency first aid response in an education and care setting *
CHCECE004	Promote and provide healthy food and drinks	HLTWHS001	Participate in Workplace Health and Safety
CHCECE005	Provide care for babies and toddlers	CHCDIV002	Promote Aboriginal and/or Torres Strait Islander cultural safety
CHCECE007	Develop positive and respectful relationships with children	CHCECE006	Support behaviour of children and young people
CHCECE009	Use an approved learning framework to guide practice	CHCECE012	Support children to connect with their world
CHCECE010	Support the holistic development of children in early childhood		

\* Unit HLTAID004 is delivered by St John Ambulance Australia Inc. or by Medilife Pty Ltd in partnership with Children's Services Education. Students are issued with a Statement of Attainment which will be used to Credit Transfer results towards your qualification. There is no additional cost, except if students do not attend their scheduled First Aid Training sessions without a valid reason or medical certificate. An additional fee will then be charged to re-book into the next scheduled First Aid training session.

# Diploma of Early Childhood Education and Care

Course code: CHC50113 CRICOS course code: 0100379

If you are passionate about helping children with their learning, social and creative development, you can enjoy fulfilling work in a career of education and care for babies, toddlers and young children. In our accredited CHC50113 Diploma of Early Childhood Education and Care you will learn how to plan, design, implement, manage and evaluate curriculum programs, and applying theories in practice.

## Practical skills

This course provides you with management and leadership skills including programming and planning, working with family, the community and your team. Our extended vocational placement program allows you to gain the knowledge, skills and experience to be job ready.

Training involves a combination of classroom learning, resource development, online learning, practical sessions, research and project work plus vocational placement in a registered education and care service.

We utilise a range of assessment methods including demonstration /direct observation of the student at vocational placement, written reports, written tests, work samples, questions and discussions, and projects. Students will need to be marked satisfactory in all assessments to successfully pass the course.

We arrange each student's vocational placement with one of our approved registered education and care service providers. Students are supervised by professional centre staff and complete vocational placement assessments facilitated by their trainer.

## Career outcomes

Successful completion of this qualification may lead to:

- Early Childhood Group Leader
- Nominated Supervisor
- Centre Coordinator
- Educational Leader
- Out of School Hours Care (OSHC) Coordinator

Delivery mode	Location	Duration	Timetable	Vocational Placement
On campus Full-time blended	Melbourne CBD or Sydney CBD	103 weeks, including 80 weeks of tuition and up to 23 weeks break	On campus 2 days per week 8.30am to 4.45pm. Tutorials 3 hours per week. Online learning average 5 hours per week during campus weeks	Includes 51 days (8 hours per day; total of 408 hours), 3 days per week over 17 vocational placement weeks

## Units undertaken for this qualification

Unit code	Unit title	Unit code	Unit title
CHCLEG001	Work legally and ethically	CHCECE022	Promote children's agency
CHCECE001	Develop cultural competence	CHCECE023	Analyse information to inform learning
CHCECE002	Ensure the health and safety of children	CHCECE024	Design and implement the curriculum to foster children's learning and development
CHCECE003	Provide care for children	CHCECE025	Embed sustainable practices in service operations
CHCECE004	Promote and provide healthy food and drinks	CHCECE026	Work in partnership with families to provide appropriate education and care for children
CHCECE005	Provide care for babies and toddlers	CHCPRT001	Identify and respond to children and young people at risk
CHCECE007	Develop positive and respectful relationships with children	HLTAID004	Provide an emergency first aid response in an education and care setting *
CHCECE009	Use an approved learning framework to guide practice	CHCDIV002	Promote Aboriginal and/or Torres Strait Islander cultural safety
CHCECE016	Establish and maintain a safe and healthy environment for children	HLTWHS003	Maintain work health and safety
CHCECE017	Foster the holistic development and wellbeing of the child in early childhood	CHCDIV001	Work with diverse people
CHCECE018	Nurture creativity in children	BSBLED401	Develop teams and individuals
CHCECE019	Facilitate compliance in an education and care services	CHCMGT003	Lead the work team
CHCECE020	Establish and implement plans for developing cooperative behaviour	CHCPOL002	Develop and implement policy
CHCECE021	Implement strategies for the inclusion of all children	CHCPRP003	Reflect on and improve own professional practice

\* Unit HLTAID004 is delivered by St John Ambulance Australia Inc, or by Medilife Pty Ltd in partnership with Children's Services Education. Students are issued with a Statement of Attainment which will be used to Credit Transfer results towards your qualification. There will be no additional cost, except if students do not attend their scheduled First Aid Training sessions without a valid reason or medical certificate. An additional fee will be charged to re-book into the next scheduled First Aid Training session.

# Certificate III in Early Childhood Education and Care Diploma of Early Childhood Education and Care

Course code: CHC30113 and CHC50113 CRICOS course code: 0100378 and 0100379

Gain a solid grounding in the industry through our accredited CHC30113 Certificate III in Early Childhood Education and Care with credits into our CHC50113 Diploma of Early Childhood Education and Care. Completing these two courses together will give you a solid foundation on which to start your new career.

## Practical skills

The Certificate III components of this course covers both the theory and hands-on experience of child development and learning, care-giving and supporting children's wellbeing.

The Diploma provides you with management and leadership skills including programming and planning, working with family, the community and your team.

Training involves a combination of classroom learning, resource development, online learning, practical sessions, research and project work plus vocational placement in a registered education and care service. We utilise a range of assessment methods including demonstration /direct observation of the student at vocational placement, written reports, written tests, work samples, questions and discussions, and projects. Students will need to be marked satisfactory in all assessments to successfully pass the course.

We arrange each student's vocational placement with one of our approved registered education and care service providers. Students are supervised by professional centre staff and complete vocational placement assessments facilitated by their trainer.

## Career outcomes

Successful completion of this qualification may lead to:

- Early Childhood Assistant Educator
- Family Day Care Educator
- Out of School Hours Care (OSHC) Assistant and/ or Coordinator
- Early Childhood Group Leader
- Nominated Supervisor
- Centre Coordinator
- Educational Leader

Delivery mode	Location	Duration	Timetable	Vocational Placement
On campus Full-time blended	Melbourne CBD or Sydney CBD	115 weeks, including 90 weeks of tuition and up to 25 weeks break	On campus 2 days per week 8.30am to 4.45pm. Tutorials 3 hours per week. Online learning average 5 hours per week during campus weeks	Includes 60 days (8 hours per day; total of 480 hours), 3 days per week over 20 vocational placement weeks

## Units undertaken for this qualification

UNIT CODE	UNIT TITLE	UNIT CODE	UNIT TITLE
CHCLEG001	Work legally and ethically	CHCECE019	Facilitate compliance in an education and care services
CHCECE001	Develop cultural competence	CHCECE020	Establish and implement plans for developing cooperative behaviour
CHCECE002	Ensure the health and safety of children	CHCECE021	Implement strategies for the inclusion of all children
CHCECE003	Provide care for children	CHCECE022	Promote children's agency
CHCECE004	Promote and provide healthy food and drinks	CHCECE023	Analyse information to inform learning
CHCECE005	Provide care for babies and toddlers	CHCECE024	Design and implement the curriculum to foster children's learning and development
CHCECE006	Support behaviour of children and young people	CHCECE025	Embed sustainable practices in service operations
CHCECE007	Develop positive and respectful relationships with children	CHCECE026	Work in partnership with families to provide appropriate education and care for children
CHCECE009	Use an approved learning framework to guide practice	CHCPRT001	Identify and respond to children and young people at risk
CHCECE010	Support the holistic development of children in early childhood	HLTAID004	Provide an emergency first aid response in an education and care setting
CHCECE011	Provide experiences to support children's play and learning	CHCDIV002	Promote Aboriginal and/or Torres Strait Islander cultural safety
CHCECE012	Support children to connect with their world	HLTWHS001	Participate in Workplace Health and Safety
CHCECE013	Use information about children to inform practice	HLTWHS003	Maintain work health and safety
CHCECE016	Establish and maintain a safe and healthy environment for children	CHCDIV001	Work with diverse people
CHCECE017	Foster the holistic development and wellbeing of the child in early childhood	BSBLED401	Develop teams and individuals
CHCECE018	Nurture creativity in children	CHCMGT003	Lead the work team
		CHCPOL002	Develop and implement policy
		CHCPRP003	Reflect on and improve own professional practice

# Entry requirements

To undertake an Early Childhood Education and Care qualification with CSE, you must:

- Be an international student
- Be over 18 years of age
- Demonstrate English language proficiency at IELTS 5.5 (no band lower than 5.0) or equivalent for entry into Certificate III course
- Demonstrate IELTS 6.0 (no band lower than 5.5) or equivalent for entry into Diploma course

- Have physical capacity to perform single rescuer cardiopulmonary resuscitation (CPR) on an adult resuscitation manikin placed on the Floor
- Have basic computer skills to complete assessments and access our online learning portal.
- Satisfy a Working with Children check. Our Student Services team will assist you with this during your orientation week

All students complete a Pre-training Review to gauge individual learner requirements.

*NOTE: A student who has completed Certificate III and seeks enrolment in a higher-level qualification with CSE requiring a higher IELTS or equivalent, may be exempt from having to provide the higher IELTS or recognised formal evidence based on their performance in class as reported by their Trainer(s). All students choosing not to provide an IELTS score may undertake the ESP Test in the first 2-weeks of their new course. This test has been benchmarked to IELTS and provides a valid and reliable reflection of their English skills.*

## Enrolment process

International students may apply through their nominated education agent. All international students must hold a current Australian Student Visa that covers the duration of the course.

1. Fill in the CSE enrolment form
2. Submit the form along with other supporting documents including passport copy, transcripts, academic records and proof of English proficiency to [admissions@cs-education.com.au](mailto:admissions@cs-education.com.au)
3. CSE admissions assess the application (Genuine temporary entrance requirement apply)
4. CSE issues Letter of Offer and Course Acceptance Agreement
5. Student accepts Course Agreement and makes payment
6. CSE issues Confirmation of Enrolment (eCOE)

## Orientation week

Students are required to attend the Orientation Week activities in the week before classes begin. During this week students are provided with detailed course information, text books and resources, campus tour and given student ID cards. They meet trainers and support staff and participate in their Pre-training Review and trainer feedback.



# University Pathways

CSE has ongoing relationships with many universities and private colleges in Victoria and New South Wales, and you may be granted credit points or exemptions towards a Bachelor Degree when you study with us.

Students completing the CHC50113 Diploma of Early Childhood Education and Care with CSE are:

- Eligible for entry into the Australian Catholic University (ACU) Bachelor of Early Childhood Education (Birth to 5 years) with up to 80 credit points, and Bachelor of Education (Early Childhood and Primary) with up to 60 credit points. Please note: total credit points awarded are determined by ACU and dependent on specific units undertaken.
- Eligible for entry into the Western Sydney University, Bachelor of Arts (Pathway to Teaching - Birth to 5 years/ Birth to 12 years) with credit equivalent to 6 months full-time study. This is equivalent to 40 credit points of the 240 total credit points required for completion of this degree.

Our training focuses on developing students' practical skills and knowledge to help give you a competitive edge in the job/careers market.

The demand for good quality early childhood educators has never been greater. If you are passionate about helping children with their social and creative development, our programs and qualifications will equip you for a rewarding career where no two days will be the same!

**WESTERN SYDNEY UNIVERSITY**



**ACU**  
AUSTRALIAN CATHOLIC UNIVERSITY

*Please note: The universities reserve the right to amend, alter, update or discontinue any aspect of the course components upon giving reasonable notice to CSE.*

## LATEST WORK FACTS



How many JOBS are available?

**1,779**  
in Australia

Early Childhood Educator  
Seek.com.au  
(January 2018)

• SYDNEY  
**681**  
• MELBOURNE  
**348**

How many of our students are working?

**79%**  
Working part time while studying

**18%**  
got their job through their vocational placement

**46%**  
Working in Childcare

Based on Melbourne and Sydney course survey 2018



Employment trend in Australia



Source: <http://joboutlook.gov.au>



Our Childcare Centre Network

**500**

Number of child care centres CSE works with

How much you could EARN

**\$800**  
per week  
Early Childhood Educator



**\$1160**  
per week  
Child Care Centre Coordinator

**\$1200**  
per week  
Early Childhood Teachers

<http://joboutlook.gov.au> January 2018



### **Sydney City Campus**

10 Quay Street  
Sydney NSW 2000 Australia  
Phone: +612 9211 4161

### **Melbourne City Campus**

Level 3, 55 Swanston Street  
Melbourne VIC 3000 Australia  
Phone: +613 9639 0000

[www.cs-education.com.au](http://www.cs-education.com.au)



Children's Services Education ABN 49 616 857 197 | National RTO Code 45514 | CRICOS Code 03780J | [enquiries@cs-education.com.au](mailto:enquiries@cs-education.com.au)

Children's Services\_brochure\_072019